

**Dewan**

Architects +  
Engineers

# PUBLIC

[www.dewan-architects.com](http://www.dewan-architects.com)



# 1.0

## THE FIRM

---

With over 33 years of commitment to excellence in design and the built environment.

Dewan Architects + Engineers has a flourishing and successful legacy spanning over 33 years. Through the spirit of its long standing culture of fostering strong relationships and encouraging dynamism and leadership, the firm has grown into one of the region's leading and highly reputed architectural and engineering consultancy firms. Dewan is a reflection of the diverse and passionate mix of people within the firm and it is through this multiplicity that we strive and grow. Creativity and utilizing the right people for the job is the driving force behind building the teams that can work closely with the clients to help achieve the task at hand.

These powerful relationships, enforced by the talent and passion of the teams, are what drive the projects and the relationships to deliver quality to the end user. As an active member of the communities we live and work in, our responsibility is to be a conscientious participant in this global world and to contribute positively and actively with a clear vision of adding value to the environment that we live in. A passion for excellence is tangibly evident in every stage of a Dewan project, from design conception to successful completion of construction.

Dewan's steadfast commitment to sustainable design and construction resonates across the firm which is dedicated to employing design and construction practices that minimize resource consumption and the negative impact of buildings on the environment. Dewan's architects and engineers are LEED Accredited Professionals and ESTIDAMA Certified Professionals.

2.0

# EXPERTISE

---

Strive to be known as the quality architects focusing on both quality of design and construction supervision.

Beyond the disciplines of Architecture, our team boasts world-class talent in Project Management, Master Planning & Urban Design, Sustainable Design, Structural Design, Mechanical & Electrical Engineering, Construction Supervision, Quantity Surveying and Specification Writing. Further, we regularly partner with experts, from around the globe, to expand our capabilities and benefits to our clients.

## OUR SERVICES

ARCHITECTURAL DESIGN

---

MASTER PLANNING + URBAN DESIGN

---

SUSTAINABLE DESIGN

---

INFRASTRUCTURE DESIGN

---

MEP ENGINEERING

---

STRUCTURAL + CIVIL ENGINEERING

---

CONSTRUCTION ADMINISTRATION

---

QUANTITY SURVEYING

---

COST PLANNING

---

# 3.0

## PUBLIC

---

We design civic buildings that are functional, sustainable and enhance the world around them.

Our wide-ranging experience in this sector enables us to offer insight, the right practices and successful outcomes. We streamline operations required between the government, real estate investment - from agency requirements and budget constraints to fiscal and acquisition policies, security concerns, and employee health and well-being. We design spaces that are meant to be utilized and enjoyed by all, catering to a vast array of specifications, tastes and requirements.

### FEATURED PROJECTS

BASRA CULTURE PALACE, BASRA, IRAQ

BASRA GOVERNORATE HQ, BASRA, IRAQ

COUNCIL OF MINISTERS COMPLEX, BAGHDAD, IRAQ

EMBASSY OF IRAQ, ABU DHABI, UAE

SHEIKH ZAYED MOSQUE CENTRE, ABU DHABI, UAE

KADHIMIYA DEVELOPMENT, BAGHDAD, IRAQ

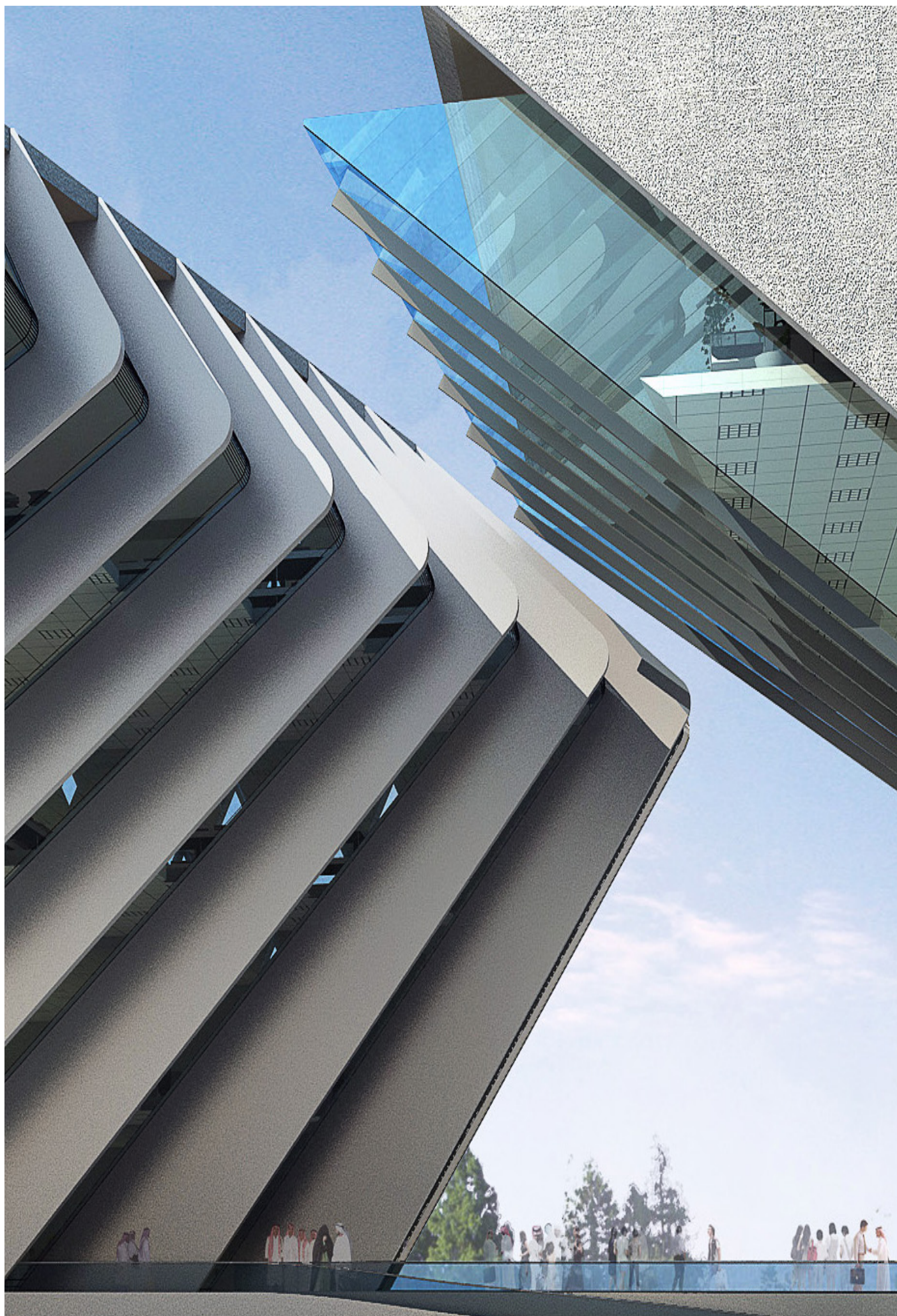
HAMDAN BIN ZAYED MOSQUE, AL AIN, UAE

KHILANI MOSQUE, ABU DHABI, UAE

MAQAM ZAIN AL ABEDEEN MOSQUE, NAJAF IRAQ

GCCIA HQ, DAMMAM, KSA







## BASRA CULTURE PALACE

Inspired by Arabic calligraphy the graded curvilinear architectural elements are also inspired by the pages of an open book.

### LOCATION

BASRA, IRAQ

### BUILT UP AREA

21,000 SQM

### CLIENT

BASRA GOVERNORATE

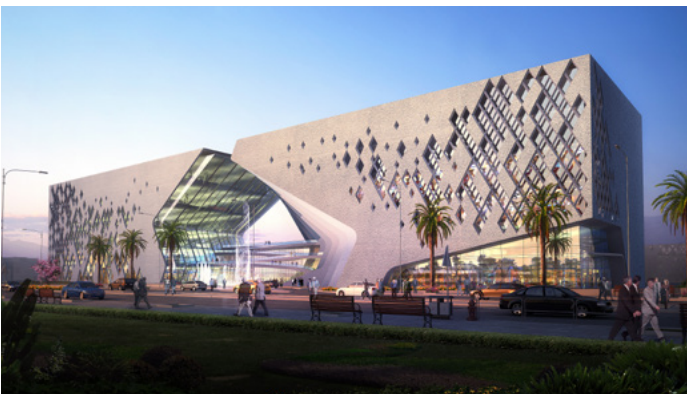
Brought to life via an international design competition held by the Basra Governorate, the Basra Culture Palace symbolises Iraq's future aspirations and celebrates Basra's rich heritage. Envisioned as the city's cultural heart, the building will host a diverse variety of events and festivals throughout the year.

The Culture Palace will be built near Shatt Al Basra, within the new administrative complex that also houses the new headquarters of the Basra Governorate. It will utilise the latest in sound and lighting technology, and conform to contemporary architectural codes of design, efficiency, sustainability, safety and security.

However, it will also unmistakably convey Basra's proud heritage and visual legacy, while portraying a bright and prosperous image of the city around it. The iconic design is inspired by Arabic calligraphy and the way in which it encloses empty spaces with artistic strokes to create meaning and value.

Diagonal openings in the building's façade represent the dots in Arabic calligraphy spreading across the main elevation they gradually decrease in size as they get closer to the main entrance, which is in fact an empty space. This remarkable void is the focal point of the Palace's architectural and engineering composition. It cuts a liberating path through the peripheral buildings to create an intangible yet inspirational core that connects everything and everyone figuratively and literally.







## BASRA GOVERNORATE HQ

The building's architecture and engineering is strongly and visibly influenced by the palm frond's organic structure.

### LOCATION

BASRA, IRAQ

### BUILT UP AREA

51,000 SQM

### CLIENT

BASRA GOVERNORATE

The new headquarters of the Basra Governorate are more than a structural edifice they are a vibrant statement of intent. The project aims to create a monumental landmark that not only represents the city's ambitions, but one that also tangibly contributes to the lives of its citizens by providing a variety of services and facilities.

Winning first prize in the internationally contested competition, Dewan Architects & Engineers' design for the new headquarters is inspired by the palm frond a time-honoured and revered symbol of Basra. The building's architecture and engineering is strongly and visibly influenced by the palm frond's organic structure.

The gently flowing design also takes into consideration the contextual location of the site and the environmental conditions prevalent in the area the objective being to maximise natural ventilation and lighting, and providing an abundance of shaded areas for visitors.





## ASTANA GRAND MOSQUE

The world's largest covered Sahan in the winter time, Inspired by the wisdom of Islam and its word.

### LOCATION

ASTANA, KAZAKHSTAN

### BUILT UP AREA

80,000 SQM

### CLIENT

SEMBOL CONSTRUCTION

The design is celebrated by its gardens and lush flowers that draw its vision from the 120 reference made in the Quran on Janat al Firdaws. The flooring pattern in the main Sahan is a circle with 8 axes that symbolize the spread of God's word and the people's embrace of Islam from all directions of the world, while the 8 axes denote that 8 gates of Jannah mentioned in the Hadeeth.

While the design philosophy of the mosque is inspired by the wisdom of Islam and establish itself as a flagship for the worshippers and the world to behold. The mosque also is a cornerstone in modern innovation that puts it on the world map through having a retractable roof with a very sophisticated technology that could be closed in winter time. This will make it the largest covered Sahan in the world with dimensions of 140 x 130 meters.

The grand mosque is the house of more than 10,000 worshippers in the main hall and another 16,000 in the Sahan who gather in this architectural marvel that holds witness to the teachings of Islam while writing another chapter in Kazakhstan story of self-made achievement and innovation.

This is a design that creates a story of a landmark and a start of an anchor to the identity of Astana. This is a design that provides another jewel to the Kazakhstan's rich history, another triumph in their present narrative and a worldly celebration of technological innovation.







## COUNCIL OF MINISTERS COMPLEX

The design pays homage to local tradition, with an impressive and magnificent scale, attention to detail, and stunning aesthetics.

### LOCATION

BAGHDAD, IRAQ

### BUILT UP AREA

140,000 SQM

### CLIENT

COUNCIL OF MINISTERS

Adorning a prime location on the banks of the ancient river Tigris in Baghdad, the new complex for the Council of Ministers is a majestic sight. Grandiose, yet with a distinct sense of purpose simultaneously representing the country's illustrious past as well as its vibrant future.

The design proposed by Dewan Architects & Engineers won third prize in the international competition organised by the Council of Ministers. It features a clear and functional arrangement of the different buildings, which combines with the architecture's inherent transparency to symbolise the new and modern Iraq.

The complex was designed to elegantly integrate with other governmental buildings in the urban context and to achieve prominence as a city landmark. Several local architectural elements and influences were incorporated into the design, but implemented with modern building technologies and methods.

This results in a unique fusion of past and present a complex that pays homage to local tradition, with an impressive and magnificent scale, attention to detail, and stunning aesthetics.







## EMBASSY OF IRAQ

Finished in a distinct yet understated style, the building's classical edifice conveys strength and solidity.

### LOCATION

ABU DHABI, UNITED ARAB EMIRATES

### BUILT UP AREA

6,500 SQM

### CLIENT

MINISTRY OF FOREIGN AFFAIRS

Modern yet intrinsically Iraqi with nuances of Islamic art, the Iraqi Embassy in Abu Dhabi presents a genuinely welcoming ambience. The central three-storey building is the embassy's administrative and office area, while an elegant two-level structure hosts the Ambassador's residence.

There are also two single storey utility buildings, in addition to a guard house. Finished in a distinct yet understated style, the building's classical edifice conveys strength and solidity. The project included landscaping and all civil and electromechanical engineering.



## SHEIKH ZAYED MOSQUE CENTRE

Connected to the Grand Mosque via a “living bridge”, the Mosque Centre hosts a reception, multi purpose hall, library and retail outlets.

### LOCATION

ABU DHABI, UNITED ARAB EMIRATES

### BUILT UP AREA

5,000 SQM

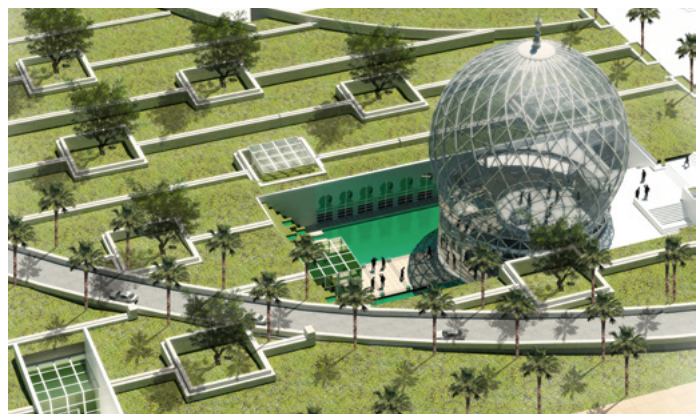
### CLIENT

GOVERNMENT OF ABU DHABI

As the largest mosque in the United Arab Emirates and the eighth largest mosque in the world, the Sheikh Zayed Grand Mosque is quite understandably an architectural masterpiece. A popular destination for both residents and tourists, its dedicated Mosque Centre offers everyone a warm welcome.

Connected to the Grand Mosque via a fully integrated “living bridge”, the Mosque Centre hosts a reception area, multi-purpose hall, library, reading areas and retail outlets. It supports and dramatises a visitor’s journey a concept based on the premise of identity and knowledge, where visitors move along a walkway towards truth and self-discovery inside the Grand Mosque.





## KADHIMIYA DEVELOPMENT

Refreshing social and economic uplift for Kadhimiya turning it into a picturesque example of a living and evolving historical city.

### LOCATION

BAGHDAD, IRAQ

### BUILT UP AREA

800,000 SQM

### CLIENT

BAGHDAD MUNICIPALITY

The half-kilometre radius encircling the Holy Shrines in Kadhimiya is endowed with a rich historical, cultural, spiritual and social legacy. Over the course of centuries, the area's time honoured markets, traditional architecture artistic activities and religious rituals have all become an integral part of Kadhimiya's distinctive appeal.

Presented by Dewan Architects & Engineers, the Integrated Conservation and Urban Renewal/ Rejuvenation Development Scheme envisions the Holy Shrines as the innermost core of the city. This core is then enveloped and protected by a variety of urban layers that mediate between the interior and the exterior world and together form a coherent whole.

The inner urban layers include important elements of the city's historical wealth these are upgraded and renovated on a plot-by-plot basis, with the aim of preserving Baghdad's intrinsic character. Next, the peripheral layers introduce contemporary residential structures that cater to the needs of a prosperous society including roads, public facilities and commercial zones.

This well thought-out mix of the ancient with the modern is enhanced by skilled landscaping and infrastructure development. The result is a refreshing social and economic uplift for Kadhimiya turning it into a picturesque example of a living and evolving historical city.







## HAMDAN BIN ZAYED MOSQUE

The design originates from the simple yet captivating polygonal Islamic pattern that forms the basis of its architectural grid.

### LOCATION

AL AIN, UNITED ARAB EMIRATES

### BUILT UP AREA

390,000 SQM

### CLIENT

HH SHEIKH HAMDAN BIN ZAYED

A spiritual and architectural jewel for Al Ain, the Hamdan Bin Zayed Mosque brings together classical Islamic influences and contemporary design techniques. The mosque's iconic design originates from the simple yet captivating polygonal Islamic pattern that forms the basis of its architectural grid. The pattern then echoes throughout the mosque to create a consistent yet non-repetitive iteration that ensures harmonious continuity.

The mosque's roof uses a double-skin technique that is aesthetically pleasing and environmentally sustainable. The double-skin allows air to freely circulate between the two skins, which in turn reduces heat transfer from the roof to the mosque's interiors thus helping to reduce internal air temperatures.





## KHILANI MOSQUE

The architectural language of the historical buildings was heavily inspired by the rich heritage of Iraqi Islamic design.

### LOCATION

ABU DHABI, UNITED ARAB EMIRATES

### BUILT UP AREA

52,000 SQM

### CLIENT

DIRECTORATE OF ISLAMIC ENDOWMENTS

The Al Khillani Islamic Centre enjoys a preeminent location adjacent to the Al Khillani Historic Mosque, on the eastern side of the city of Baghdad. Conservation of the existing Mosque and library buildings were vital components of the design, influencing the concept for the centre. The architectural language of the historical buildings was heavily inspired by the rich heritage of Iraqi Islamic design.

The project is composed of the Mosque, the religious school, a research centre, public library, a guesthouse for VIP visitors, multipurpose hall, VIP visitors' hall, halls for religious events, secondary halls for presentations and similar activities and commercial offices. The external courtyard of the complex occupies the maximum area possible in order to accommodate the large number of worshippers by orienting it towards the Qibla.





## MAQAM ZAIN AL ABEDEEN MOSQUE

Consists of two floors, ground and basement, where the ablution spaces are housed, thus ensuring the smooth circulation of the visitors to the Holy sites.

### LOCATION

NAJAF, IRAQ

### BUILT UP AREA

10,000 SQM

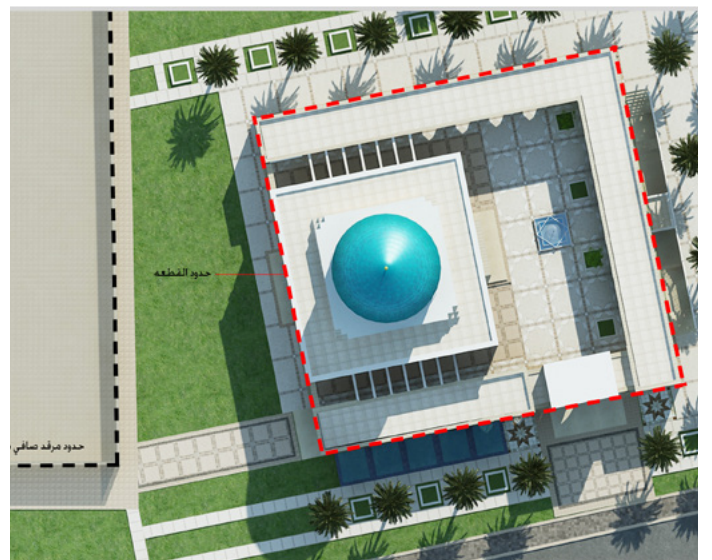
### CLIENT

SHIA AWQAAF ENDOWEMENT

Taking inspiration from the traditional forms of Iraqi Islamic architecture, where colonnades and arches dominate, together with the subtle elegance of the architectural language of the adjacent Safi Safa shrine, Dewan's plans for Maqam Imam Zein Al Abdeen was heavily influenced by its highly significant location. The Maqam's site is on the main road to the west of the old city of Najaf, on a clifftop overlooking the Sea of Najaf and the Imam Ali Holy Shrine.

Emphasising the visual relationship with both adjacent holy Shrines was an integral part of the design, and this was achieved through the creation of a central courtyard surrounded by open colonnades that complement the Maqam's distinguished surroundings. The Maqam itself consists of two floors, ground and basement, where the ablution spaces are housed, thus ensuring the smooth circulation of the visitors to the Holy sites.







## GCCIA HQ

Hard and soft landscapes with water features are dotted around the complex to create a pleasant atmosphere and enhance the setting.

### LOCATION

DAMMAM, SAUDI ARABIA

### BUILT UP AREA

12,000 SQM

### CLIENT

GCC INTERCONNECTION AUTHORITY

Dewan was awarded third place in the prestigious architectural competition to design the Gulf Cooperation Interconnection Authority Headquarters Building in Dammam, KSA. The project includes a main office building for the HQ, recreation centre and small mosque. The office block consists of G+6 luxurious office floors with basement floor for car parking and building services.

In addition to providing a sophisticated venue complete with advanced technological systems, special consideration was given to the climate conditions, which influenced our choice of quality materials.

Our approach offered a people-friendly environment with an exciting contemporary urban form. Hard and soft landscapes with water features are dotted around the complex to create a pleasant atmosphere and enhance the setting.







# Dewan

Architects +  
Engineers

## ABU DHABI, UAE

P.O Box 2967, Villa B21, Marina Village  
T (+971) 2 681 5777  
F (+971) 2 681 5776  
abudhabi@dewan-architects.com

## DUBAI, UAE

401 B, Building 5, Dubai Design District  
T (+971) 4 240 2010  
F (+971) 4 770 7698  
dubai@dewan-architects.com

## RIYADH, KSA

P.O Box 99824, Olaya District  
T (+966) 9200 29750  
F (+966) 9200 29750  
riyadh@dewan-architects.com

## BARCELONA, SPAIN

Riba 36, 08950 Esplugues del Llobregat  
T (+34) 933 427 427  
F (+34) 933 427 420  
barcelona@dewan-architects.com

## BAGHDAD, IRAQ

Sector No. 915, St. 35 Villa 08, Jadiriya  
M (+964) 780 1944498  
M (+962) 799 997754  
baghdad@dewan-architects.com

## MANILA, PHILIPPINES

ZIP Code 1605, Pasig City  
T (+632) 470 8197  
F (+632) 470 6532  
manila@dewan-architects.com