

Dewan

Architects +
Engineers

iraq
experience

www.dewan-architects.com

© dewan.ae

© 2022, Dewan Architects + Engineers

ALL RIGHTS RESERVED.

Any unauthorized reprint or use of this material is strictly prohibited. No part of this publication may be reproduced or transmitted in any form or by electronic or mechanical means, including photocopying or by any information storage and retrieval system without permission in writing from the publisher.

Dewan
Architects +
Engineers

Who We Are

Dewan Architects + Engineers is a collective of architects, engineers, designers, planners, builders, makers, thinkers, and visionaries. Our collaborative team amasses over 35 years experience of designing and constructing innovative projects that redefine skylines, connect locals and visitors to cultural icons, and drastically raise the standard for sustainability.

+

1984

Dewan Established

1st Office,
Abu Dhabi,
United Arab Emirates

Since establishing our first office in 1984 in Abu Dhabi, Dewan has been integral to the Middle East's booming architectural and engineering industries. We've enhanced cities and suburban areas across the Middle East, from constructing Fountain Views, a spectacular mixed use residential development in Dubai, to designing Mamsha Al Saadiat, a master-planned community that promotes social cohesion through incorporating pristine beaches, stunning apartments, and world-class museums. Dewan is also a key partner in Saudi Vision 2030, the Kingdom's



Future -Ready

ambitious initiative to modernize and diversify its economy, with a focus on sustainable development. We're a team of optimists and innovators who motivate each other and our industry at-large to continue to push the boundaries of architecture. Dewan operates in a dozen countries across Europe, the Middle East, and Asia, specializing in mixed use, hospitality, residential, commercial, education, retail, and urban planning. Widely recognized by influential publications and numerous industry awards, Dewan continually elevates architecture's role in contributing to thriving societies.

What We Do

Dewan Architects + Engineers is a full-service design firm that manages complex and demanding projects of all sizes. Our multidisciplinary team leverages the latest technologies in construction and architecture to maximize sustainability, create unique and boundary-breaking designs, and deliver large-scale projects on-time under tight budgets.

+ Expertise

Architecture

- Conceptual Design
- Design Development
- BIM/Revit
- Graphic Design
- Data-Driven Design

Engineering

- Structural Engineering
- Mechanical Engineering
- Electrical Engineering
- Civil Engineering
- Architectural Engineering



Master Planning

- Structural & Regional Planning
- Urban Planning
- District Units Planning
- Urban Regeneration & Renewal
- Landscape Design

Interior Design

- Space Planning
- Furniture Schedules
- Signage & Wayfinding
- Art Design

Sustainability

- LEED/ESTIDAMA (APs/PQPs)
- Energy Modeling
- Environmental Impact Studies
- Daylighting Modeling & Analysis

Post Contract

- Construction Management
- Construction Supervision
- Defects Liability Supervision
- Progress Reporting
- Cost Control & Planning
- Pre/Post Contract QS
- BOQs
- Value Engineering
- Contract Documentation

Global Reach

Our dedicated teams work in nearly a dozen countries across the Middle East and Europe and have partnered with more than 100 high profile firms around the world.

+ At a glance

400 +

Projects

500 +

Professionals

30 +

Awards & Rankings

08

Offices

39 +

Languages

50 +

Nationalities

Offices

– Abu Dhabi
United Arab Emirates

– Dubai
United Arab Emirates

– Sharjah
United Arab Emirates

– Riyadh
Saudi Arabia

– Cairo
Egypt

– Baghdad
Iraq

– Barcelona
Spain

– Manila
Philippines





Madinat Al Nakheel

Location Basra, Iraq
Size 42 Million sqm
Client Private



The city extends a warm welcome with luxury resorts, cultural exhibits and venues, and a variety of recreational activities.

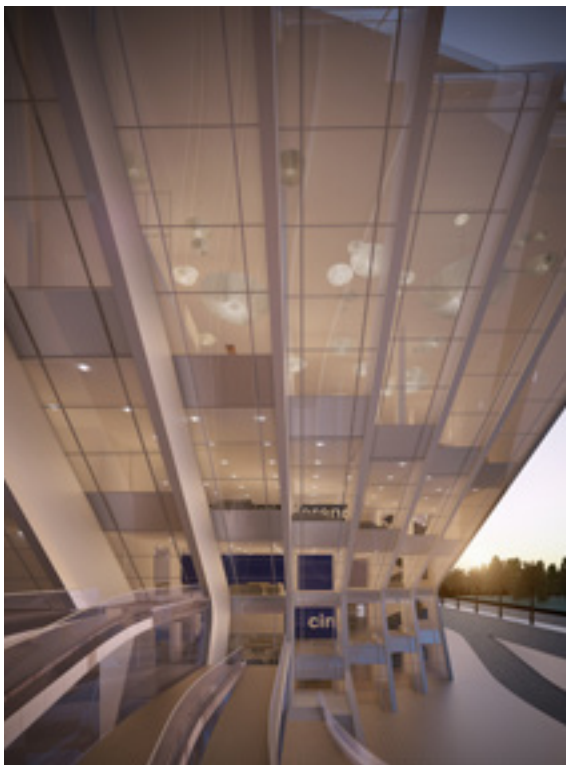
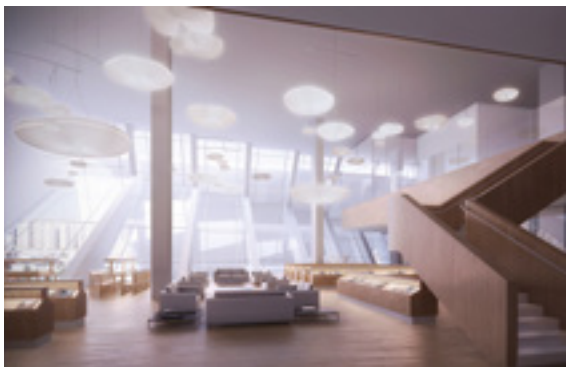
An ambitious and visionary project, Madinat Al Nakheel seeks to epitomise a city ideal not only for Iraq, but also for the rest of the Middle East. Located in Basra, the masterplan development creates a dynamic and world-class destination for residents, businesses and tourism. Madinat Al Nakheel is a modern and sustainable city harmoniously combining residential commercial, cultural, social, industrial and environmental elements under one holistic vision. Its carefully conceived residential component offering about 100,000 units is fully integrated with the city's vast infrastructure. This includes healthcare public services, social facilities and educational institutions. The city also hosts a vibrant commercial hub, with its own financial centre that serves a thriving business community.

Basra
Culture Palace

Location Basra, Iraq
Size 21,000 sqm
Client Basra Governorate

Inspired by Arabic calligraphy the graded curvilinear architectural elements are also inspired by the pages of an open book.

The Culture Palace will be built near Shatt Al Basra, within the new administrative complex that also houses the new headquarters of the Basra Governorate. It will utilise the latest in sound and lighting technology, and conform to contemporary architectural codes of design, efficiency, sustainability, safety and security. However, it will also unmistakably convey Basra's proud heritage and visual legacy, while portraying a bright and prosperous image of the city around it. The iconic design is inspired by Arabic calligraphy and the way in which it encloses empty spaces with artistic strokes to create meaning and value. Diagonal openings in the building's façade represent the dots in Arabic calligraphy spreading across the main elevation they gradually decrease in size as they get closer to the main entrance, which is in fact an empty space. This remarkable void is the focal point of the Palace's architectural and engineering composition.





Basra Governorate HQ

Location Basra, Iraq
Size 51,000 sqm
Client Basra Governorate



The building's architecture and engineering is strongly and visibly influenced by the palm frond's organic structure.

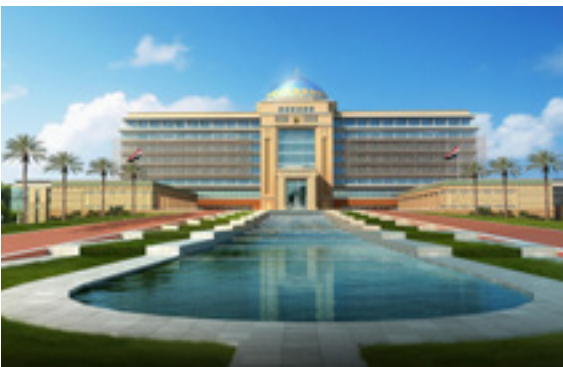
The new headquarters of the Basra Governorate are more than a structural edifice they are a vibrant statement of intent. The project aims to create a monumental landmark that not only represents the city's ambitions, but one that also tangibly contributes to the lives of its citizens by providing a variety of services and facilities. Winning first prize in the internationally contested competition, Dewan Architects & Engineers' design for the new headquarters is inspired by the palm frond a time-honoured and revered symbol of Basra.

Council of Minsiters
Complex

Location Baghdad, Iraq
Size 140,000 sqm
Client Council of Minsiters

The design pays homage to local tradition, with an impressive and magnificent scale, attention to detail, and stunning aesthetics.

Adorning a prime location on the banks of the ancient river Tigris in Baghdad, the new complex for the Council of Ministers is a majestic sight. Grandiose, yet with a distinct sense of purpose simultaneously representing the country's illustrious past as well as its vibrant future. The design proposed by Dewan Architects & Engineers won third prize in the international competition organised by the Council of Ministers. It features a clear and functional arrangement of the different buildings, which combines with the architecture's inherent transparency to symbolise the new and modern Iraq.





Kadhimiya Development

Location Baghdad, Iraq
Size 800,000 sqm
Client Baghdad Municipality



Refreshing social and economic uplift for Kadhimiya turning it into a picturesque example of a living and evolving historical city.

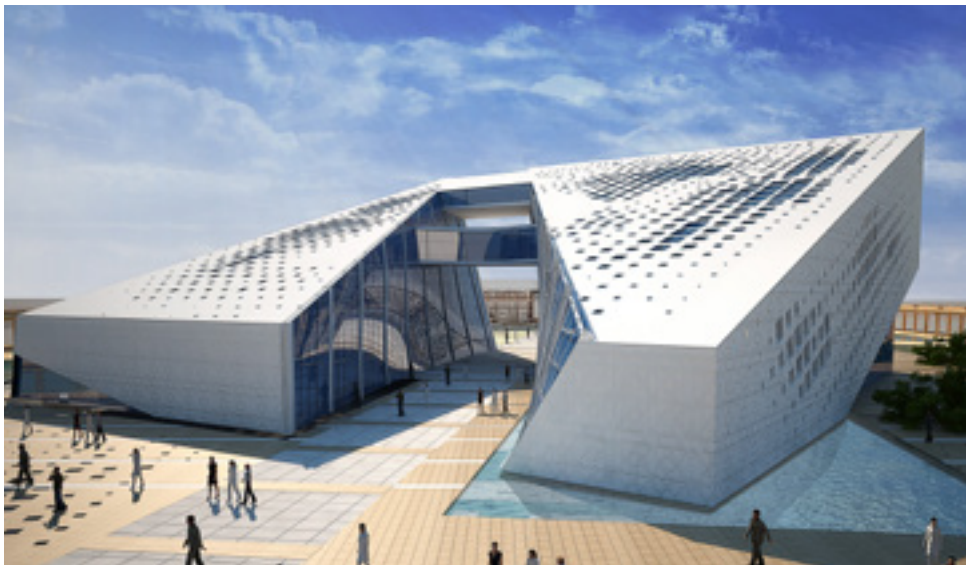
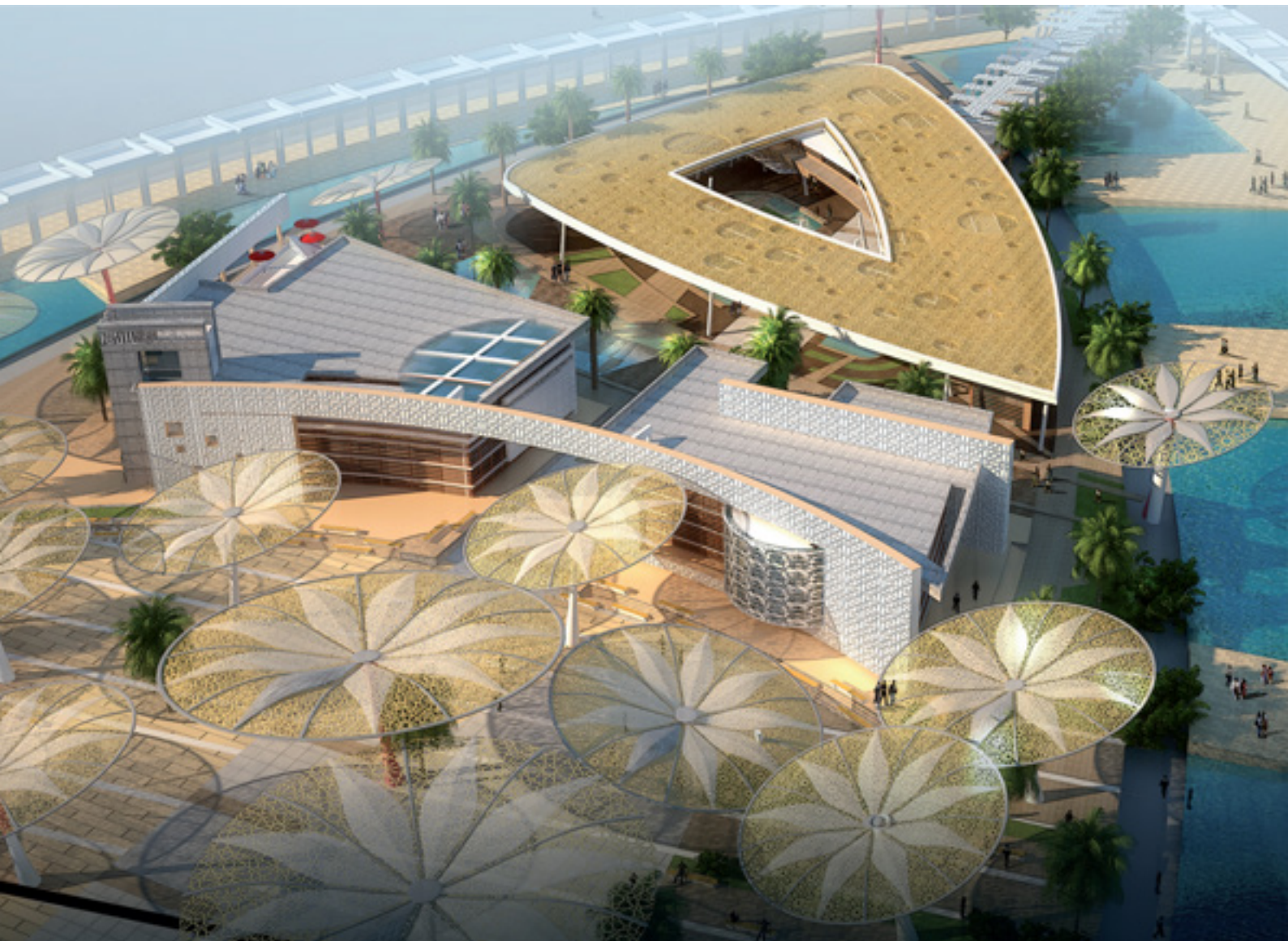
The half-kilometre radius encircling the Holy Shrines in Kadhimiya is endowed with a rich historical, cultural, spiritual and social legacy. Over the course of centuries, the area's time honoured markets, traditional architecture artistic activities and religious rituals have all become an integral part of Kadhimiya's distinctive appeal. The Integrated Conservation and Urban Renewal/Rejuvenation Development Scheme envisions the Holy Shrines as the innermost core of the city. This core is then enveloped and protected by a variety of urban layers that mediate between the interior and the exterior world and together form a coherent whole. The inner urban layers include important elements of the city's historical wealth these are upgraded and renovated on a plot-by-plot basis, with the aim of preserving Baghdad's intrinsic character.

Samarra
University

Location Samarra, Iraq
Size 2.6 Million sqm
Client Ministry of Higher Education and Scientific Research

The architecture challenges convention by creating vibrant urban spaces that enhance an interactive educational environment.

Home to 16 specialised colleges, the Samarra University plays a pivotal role in empowering the next generation of Iraqis. Its sprawling campus hosts state-of-the-art research centres and laboratories, conference hall, central library, student and faculty residences, social and cultural centres, sports facilities, agricultural farms, the university headquarters and deanship building, mosque and many other facilities. Offering a world class academic and research environment, Samarra University is intended to accommodate more than 20,000 students. A key design objective is to create spaces that facilitate and encourage meaningful academic and social student interactions.





Karbala University

Location Karbala, Iraq
Size 16,000 sqm
Client University of Karbala

Sculpted to seamlessly merge the interior with the exterior with a spider system glass structure that creates a welcoming entrance.

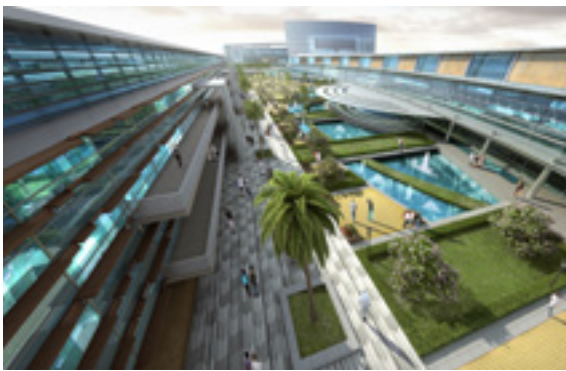
Regular geometric forms are utilised to balance the effect and convey a sense of effortless grace. The building's core is purposefully kept hollow to allow natural light and ventilation into the central corridors and spaces. Similarly, the building's open northern corner is skilfully sculpted to seamlessly merge the interior with the exterior. It is then adorned with a spider system glass structure that creates a welcoming entrance. This also helps to maintain a visual and physical connection with the project's other buildings, which in an appealing contrast to the soaring height of the main building - are a series of elegant low-rise structures. These constitute the various public facilities such as a conference hall, exhibition areas, prayer halls and a cafeteria.

**Basra Medical
City University**

Location Basra, Iraq
Size 110,000 sqm
Client Imam Hussein Holy Shrine

The design and architecture is derived from ancient Sumerian culture and the symbolism of serpents coiled into a double helix.

The project's design and architecture is derived from ancient Sumerian culture and the symbolism of serpents coiled into a double helix. It is one half of this helix that provides the concept around which the campus is planned. The helix's curved form inspires the central academic plaza that is surrounded by the four faculties, as well as various facilities such as the main library, auditorium and student centre. Serving as the campus' hub literally and metaphorically the academic plaza is where students meet gather and interact socially. In addition to the presidency building that also functions as the campus' main entrance, the project also includes staff and student residences, and a comprehensive sports zone.





Al Khilani Mosque

Location Baghdad, Iraq
Size 52,000 sqm
Client Directorate of Islamic Endowments



The architectural language of the historical buildings was heavily inspired by the rich heritage of Iraqi Islamic design.

The Al Khillani Islamic Centre enjoys a preeminent location adjacent to the Al Khillani Historic Mosque, on the eastern side of the city of Baghdad. Conservation of the existing Mosque and library buildings were vital components of the design, influencing the concept for the centre. The project is composed of the Mosque, the religious school, a research centre, public library, a guesthouse for VIP visitors, multipurpose hall, VIP visitors' hall, halls for religious events, secondary halls for presentations and similar activities and commercial offices. The external courtyard of the complex occupies the maximum area possible in order to accommodate the large number of worshippers by orienting it towards the Qibla.

Dora University
Accomodation

Location Baghdad, Iraq
Size 86,000 sqm
Client Ministry of Higher Education and Scientific Research

Inspired by the wonders of ancient Mesopotamia, the Hanging Gardens of Babylon and the Ziggurats the building’s roof.

Envisioned as a single continuous element emerging from the ground, the dynamism of this iconic building is a dual reflection of the energy of youth on the one hand, and of the progression of the learning process on the other. Skilfully woven into the urban fabric, the architecture complements its surroundings rather than imposing its own perspective. The two main semi public plazas dedicated to students and their social activities help to create a seamless interface between academia and society at large. Taking inspiration from the wonders of ancient Mesopotamia in particular the Hanging Gardens of Babylon and the ziggurats the building’s roof is a seemingly endless tract of terraces and gardens.





Maqam Zain Al Abedeen Mosque

Location Najaf, Iraq
Size 10,000 sqm
Client Shiaa Awqaaf Endowment



Consists of two floors where the ablution spaces are housed, thus ensuring the smooth circulation of the visitors to the Holy sites.

Taking inspiration from the traditional forms of Iraqi Islamic architecture, where colonnades and arches dominate, together with the subtle elegance of the architectural language of the adjacent Safi Safa shrine, Dewan's plans for Maqam Imam Zein Al Abdeen was heavily influenced by its highly significant location. The Maqam's site is on the main road to the west of the old city of Najaf, on a clifftop overlooking the Sea of Najaf and the Imam Ali Holy Shrine. Emphasising the visual relationship with both adjacent holy Shrines was an integral part of the design, and this was achieved through the creation of a central courtyard surrounded by open colonnades that complement the Maqam's distinguished surroundings.



Oil & Gas University

Location Basra, Iraq
Size 140,000 sqm
Client University of Kufa

Built around a central courtyard to create a social node where students meet and interact amongst shaded and ventilated areas.

The project includes several administrative buildings, various colleges, a vast conference hall, central library, laboratories and workshops. There are also solar and renewable energy generation fields, a recycling zone, and a dedicated area for geological experiments and excavations. The master design carefully arranges the various buildings and structures along two main axes. The first axis perpendicular to the main street is designated as the primary circulation axis along which all public buildings are arranged. The second axis running from north to west takes into consideration the sun's path and direction of prevailing winds. The academic buildings are arranged along this axis for optimal comfort and energy efficiency.



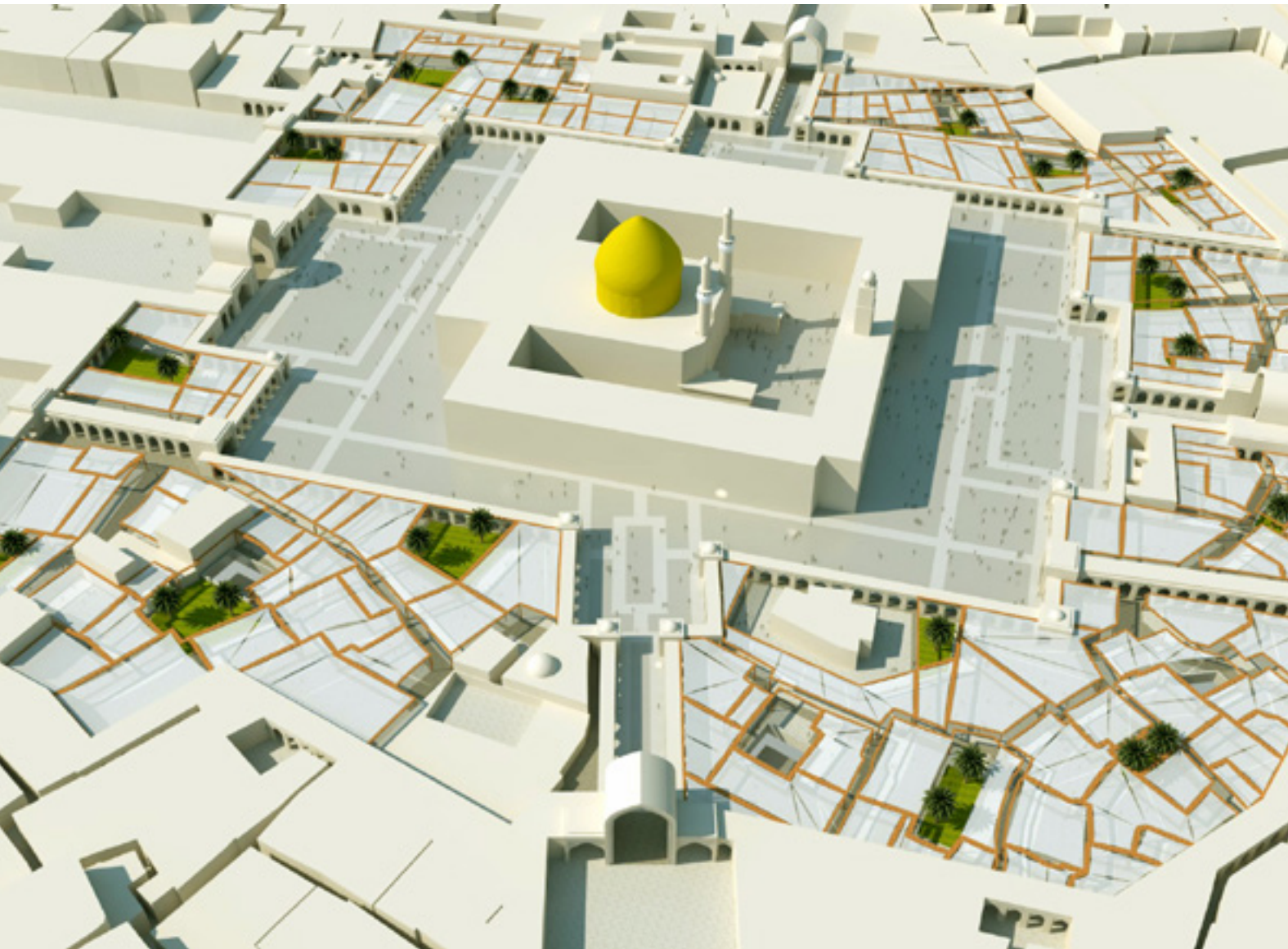
Al Karkh Sports Club

Location Baghdad, Iraq
Size 141,000 sqm
Client ASK Group



Contemporary architecture and design language reinforce this energy to create a stimulating new building for modern Baghdad.

The iconic design of the Al Karkh Sports Club in Baghdad is strongly influenced by two major aspects. First, the dynamic and energetic nature of sports in general. Second, the site's location at the intersection of two prominent streets (Al Zawraa and Al Mansur). The result is both inspiring and imaginative creating a new and unforgettable landmark for the city. In addition to the main stadium, the project's core components include an indoor sports hall, shopping mall and hotel administration offices and basement car parking. The entrance is designed to express a bold statement of purpose - creating a powerful focal point for visitors and enabling them to enjoy a clear sense of orientation.



Najaf Urban Renewal

Location Najaf, Iraq
Size 1.5 Million sqm
Client Najaf Municipality



Envisions the building of enhanced infrastructure and additional hospitality venues, and the upgrading of commercial services.

The Iraqi cities of Najaf and Karbala hold immense religious significance. Visited by millions of pilgrims annually, these two cities also embody immeasurable historical, social and cultural wealth. An urban renewal of both cities is necessary to not only preserve and showcase their heritage and character, but to also adequately cater to the needs of the countless people who visit throughout the year. A crucial design objective is to successfully regenerate the urban fabric in a manner that ensures the conservation of religious sites and heritage buildings, and also skilfully emphasises each city's distinctive identity.

Karbala
Urban Renewal

Location Karbala, Iraq
Size 1.5 Million sqm
Client Karbala Municipality

Successfully regenerating the urban fabric in a manner that ensures the conservation of religious sites and heritage buildings.

The Iraqi cities of Najaf and Karbala hold immense religious significance. Visited by millions of pilgrims annually, these two cities also embody immeasurable historical, social and cultural wealth. An urban renewal of both cities is necessary to not only preserve and showcase their heritage and character, but to also adequately cater to the needs of the countless people who visit throughout the year. A crucial design objective is to successfully regenerate the urban fabric in a manner that ensures the conservation of religious sites and heritage buildings, and also skilfully emphasises each city's distinctive identity.



Iraq Experience

Dewan

Architects +
Engineers

Abu Dhabi, UAE

T +971 (2) 681 5777
E abudhabi@dewan-architects.com

Dubai, UAE

T +971 (4) 240 2010
E dubai@dewan-architects.com

Sharjah, UAE

T +971 (6) 599 6400
E sharjah@dewan-architects.com

Barcelona, Spain

T +34 933 427 427
E barcelona@dewan-architects.com

Riyadh, KSA

T +966 9200 29750
E riyadh@dewan-architects.com

Baghdad, Iraq

T +964 780 194 4498
E baghdad@dewan-architects.com

Cairo, Egypt

T +20 2 23146191
E cairo@dewan-architects.com

Manila, Philippines

T +632 470 8197
E manila@dewan-architects.com