

**Dewan**

Architects +  
Engineers

# Retail Experience



[www.dewan-architects.com](http://www.dewan-architects.com)

@dewan.ae

© 2022, Dewan Architects + Engineers

ALL RIGHTS RESERVED.

Any unauthorized reprint or use of this material is strictly prohibited. No part of this publication may be reproduced or transmitted in any form or by electronic or mechanical means, including photocopying or by any information storage and retrieval system without permission in writing from the publisher.

**Dewan**  
Architects +  
Engineers

## Who We Are

Dewan Architects + Engineers is a collective of architects, engineers, designers, planners, builders, makers, thinkers, and visionaries. Our collaborative team amasses over 35 years experience of designing and constructing innovative projects that redefine skylines, connect locals and visitors to cultural icons, and drastically raise the standard for sustainability.

+  
1984

### Dewan Established

1<sup>st</sup> Office,  
Abu Dhabi,  
United Arab Emirates

Since establishing our first office in 1984 in Abu Dhabi, Dewan has been integral to the Middle East's booming architectural and engineering industries. We've enhanced cities and suburban areas across the Middle East, from constructing Fountain Views, a spectacular mixed use residential development in Dubai, to designing Mamsha Al Saadiat, a master-planned community that promotes social cohesion through incorporating pristine beaches, stunning apartments, and world-class museums. Dewan is also a key partner in Saudi Vision 2030, the Kingdom's



# Future -Ready

ambitious initiative to modernize and diversify its economy, with a focus on sustainable development. We're a team of optimists and innovators who motivate each other and our industry at-large to continue to push the boundaries of architecture. Dewan operates in a dozen countries across Europe, the Middle East, and Asia, specializing in mixed use, hospitality, residential, commercial, education, retail, and urban planning. Widely recognized by influential publications and numerous industry awards, Dewan continually elevates architecture's role in contributing to thriving societies.



# What We Do

Dewan Architects + Engineers is a full-service design firm that manages complex and demanding projects of all sizes. Our multidisciplinary team leverages the latest technologies in construction and architecture to maximize sustainability, create unique and boundary-breaking designs, and deliver large-scale projects on-time under tight budgets.

## + Expertise

### Architecture

- Conceptual Design
- Design Development
- BIM/Revit
- Graphic Design
- Data-Driven Design

### Engineering

- Structural Engineering
- Mechanical Engineering
- Electrical Engineering
- Civil Engineering
- Architectural Engineering



### Master Planning

- Structural & Regional Planning
- Urban Planning
- District Units Planning
- Urban Regeneration & Renewal
- Landscape Design

### Interior Design

- Space Planning
- Furniture Schedules
- Signage & Wayfinding
- Art Design

### Sustainability

- LEED/ESTIDAMA (APs/PQPs)
- Energy Modeling
- Environmental Impact Studies
- Daylighting Modeling & Analysis

### Post Contract

- Construction Management
- Construction Supervision
- Defects Liability Supervision
- Progress Reporting
- Cost Control & Planning
- Pre/Post Contract QS
- BOQs
- Value Engineering
- Contract Documentation

# Global Reach

Our dedicated teams work in nearly a dozen countries across the Middle East and Europe and have partnered with more than 100 high profile firms around the world.

## + At a glance

**400 +**

Projects

**500 +**

Professionals

**30 +**

Awards &amp; Rankings

**08**

Offices

**39 +**

Languages

**50 +**

Nationalities

## Offices

– Abu Dhabi  
United Arab Emirates

– Dubai  
United Arab Emirates

– Sharjah  
United Arab Emirates

– Riyadh  
Saudi Arabia

– Cairo  
Egypt

– Baghdad  
Iraq

– Barcelona  
Spain

– Manila  
Philippines







## Riverland Dubai

Location	Dubai, UAE
Size	300,000 sqm
Client	Meraas
Associates	RTKL



Four vibrant districts make up the dining, retail and entertainment destination and are free for all to visit.

Located in Jebel Ali with the potential for up to 3.2 kilometers frontage directly on to Sheikh Zayed road, near to the border of Abu Dhabi, which is approximately 8km away. The development Master Plan is comprised of various key components. These include seven distinct theme parks and six hotels. Riverland constitutes the retail, entertainment and dining district of the development. It is based on the exciting RD&E concept, the theme parks and hotels will be connected by a vibrant district that will feature retail, dining and entertainment offerings providing an exceptional lifestyle component to Dubai's latest leisure and entertainment destination.



# First Avenue Mall & Hotel

**Location** Dubai, UAE  
**Size** 43,000 sqm  
**Client** Al Tawfeek Development & Investment

Its architecture is a series of stepped and curving plazas blends in seamlessly with existing buildings and the surrounding landscape.

Complementing the open environs of Dubai Motor City with a refreshing walk-through design, First Avenue Motor City serves as the social centre and retail hub for the entire community. Adjacent to the development's main pedestrian and vehicular thoroughfares, the mall offers a rich variety of outdoor and indoor experiences with an innovative mix of retail and dining concepts. The appeal is distinctly contemporary, but subtle arabesque influences are softly interwoven to create a culturally engaging public ambience. Featuring top brands and renowned marquees, First Avenue Motor City is a rewarding destination for adults and children alike.

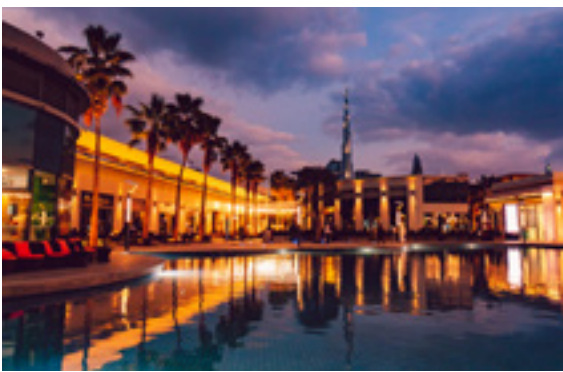






**City Walk**  
**Phase 1**

Location	Dubai, UAE
Size	13,000 sqm
Client	Meraas
Associates	Benoy



An oasis of elegant relaxation and outdoor enjoyment for the entire community in the midst of a bustling urban setting.

Complementing a prime residential neighbourhood in Dubai’s Jumeirah district, the Citywalk is a chic and contemporary retail destination serving residents as well as visitors. It hosts nearly 60 retail units including a wellknown supermarket brand, stylish restaurants and cafés, and a reputable healthcare clinic. Citywalk offers an appealing retail and leisure experience, enhanced by extensive landscaping, water features and green areas. It creates an oasis of elegant relaxation and outdoor enjoyment in the midst of a bustling urban setting a social nexus for the entire Jumeirah community.



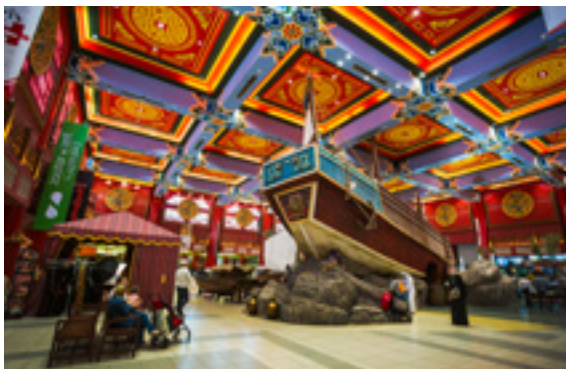
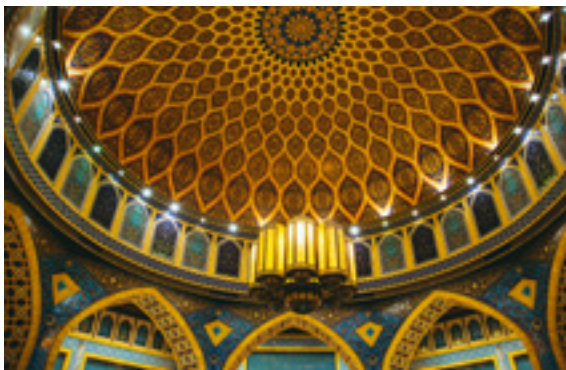
Ibn Batutta

Mall

Location	Dubai, UAE
Size	350,000 sqm
Client	Nakheel
Associates	Callison

One of Dubai's most visited tourist destinations, equally famed for its architecture and interiors, as much as for its retail offering.

Ibn Battuta Mall is the world's first shopping complex inspired by an epic journey of discovery. Nearly six centuries ago, Ibn Battuta a young Arab explorer embarked on his now famous voyage. History regards him as a revered scholar and a man of great wisdom. As the world's largest themed shopping mall, Ibn Battuta Mall celebrates the famed adventurer's travels by creating authentic representations of the countries he visited: Andalusia, Tunisia, Egypt, Persia, India and China. Each country is experienced in a different "court" skilfully rendered with period architecture, exhibits and ambience. The result is nearly 1.5 kilometres of a magnificent retail promenade across six impressively themed courts offering visitors not just a shopping and dining experience, but also one that is educational and entertaining.







## Reem Mall

Location	Abu Dhabi, UAE
Size	585,000 sqm
Client	Al Farwaniya Property Developments
Associates	RTKL

World's largest indoor snow park, Reem Mall will become a major new retail, leisure, dining and entertainment destination.

Reem Mall located is set to become a contemporary world class retail centre, meeting the needs of the whole region for residents and providing attraction and entertainment for visitors. The Mall will be home to the largest Hypermarket in Abu Dhabi that will include around 450 stores, 85 F&B outlets and a range of family-focused entertainment offerings. The scheme is well planned and designed drawing on a wealth of international experience from the design team. The retail and entertainment experience is choreographed, providing retailers with ideal unit configuration, and the visitor with an attractive overall tenant mix.



**Kings Walk  
Mall & Hotel**

**Location** Jeddah, KSA  
**Size** 38,000 sqm  
**Client** Assaudia Real Estate Development Company

This unique leisure development includes retail, restaurants, entertainment and lies a 5 star hotel consisting of seven stories.

King's Walk Mall was created to deliver a one of a kind shopping experience to the residents of Jeddah. It will redefine the meaning of outdoor shopping in the city. Permeability is essential within the total design with a great deal of opportunity to strengthen connectivity with the neighboring surroundings. The structure's stratified polygonal blocks of retail are enriched with an array of minimalistic geometric patterns that provide a contrast to the undulating canopy that highlights the thermal comfort of the central promenade. The hotel will be operated by Accor featuring 111 keys and 69 serviced apartments. The project is a new addition to Jeddah's open and luxurious leisure destination. A walkway with modern and luxurious leisure facilities, health and beauty centers and shops.







## Peacock Park

**Location** Dubai, UAE  
**Size** 38,000 sqm  
**Client** Dubai Holdings  
**Associates** 5+design

A hub of daytime and nighttime excitement comprising of 7 high end Food and Beverage Pavilions.

Peacock Park brings to the iconic property, a hub of daytime and nighttime excitement comprising of 7 high end Food and Beverage Pavilions. Contemporary façades animated with outdoor al fresco dining opportunities create a popular attraction for the property. Convenient and easy access, whether arriving by car or by foot, and with direct pedestrian bridge connections to Jumeirah Emirates Towers and DIFC, ensures a pleasant experience. Whether casually dining under the stars or enjoying a romantic dinner in an elegant restaurant, Peacock Park delivers on the quality and experience one would expect from the Jumeirah Emirates Towers property.



**Sahara Mall**  
**West Expansion**

**Location** Sharjah, UAE  
**Size** 93,000 sqm  
**Client** Bukhatir Properties International

This expansion project will be seamlessly linked to the currently existing Sahara City Shopping Mall.

Making way for a wide range of high-end retail spaces which will attract a more diverse and international mix of shoppers. The first three floors are designed following the existing mall's character of homogeneity and massiveness. The higher five floors will have a mix of retail outlets, clinic and offices which showcase a contemporary, minimalist architectural scheme with extensive use of curtain walls and overhanging louvered canopies. A significant open space for alfresco dining and break out sit perfectly on the rooftop with a skylight that allows natural light to radiate inside the space. An additional 3-level parking space basement will also be included.





**The Avenues**  
**Mall Sharjah**

**Location** Sharjah, UAE  
**Size** 160,000 sqm  
**Client** Shurooq

Well positioned at the junction of sheikh mohammed bin zayed & al dhaid road.

The Avenues Mall, is a local mall/ shopping center within Al Rifa'a Area, Sharjah. This Mall is proposed to include not only retail, F&B & food courts but also a family entertainment center, supermarket and cinema. Shell and core Office facilities will also be provided on the first floor. The proposed development is located in a prime location, northwest of Sheikh Mohammed Bin Zayed road. This adjacency to Sheikh Mohammed Bin Zayed leads to an optimal connectivity to not only Sharjah city but also the adjacent emirates of Dubai and Ajman. This exclusive mall can be reached from Dubai within 45 minutes and from Ajman 1ithin 15 minutes.







## Arena Mall

**Location** Dubai, UAE  
**Size** 280,000 sqm  
**Client** Dubai Sports City  
**Associates** F+A Architects



Captures the imagination with sophisticated flair and pleasing symmetry when viewed from the surrounding residential towers.

Serving as the primary retail destination for Dubai Sports City, the Arena Mall captures the imagination with its inspired design and sophisticated flair. Rectangular in shape, it offers a pleasing symmetry when viewed from the surrounding residential towers. Inside, a spherical form is embodied in the “flying-saucershaped” food court that resonates with energy and zest. Built from concrete and steel, the mall is 40 metres high with glazed curtain walls and rugged granite interiors specifically chosen to symbolise the strength and resilience inherent to competitive sports. The project consists of a retail mall spread across two levels, and a professional health club on the roof level.



Downtown

Retail Promenade

Location

Size

Client

Dubai, UAE

9,000 sqm

Emaar

A myriad of spaces and moods from laid-back relaxation in the courtyard, to the stylish flair of the main piazza.

At the foot of the world's tallest building and adjacent to one of the world's largest malls, the Downtown Retail Promenade is a popular destination for tourists and residents alike. This vast yet chic esplanade overlooks the Dubai Fountain and takes its design inspiration from the sense of openness and freedom that this celebrated body of water conveys. Intended to be a transformative environment, the Downtown Retail Promenade invites visitors to experience a unique landscape. Its design weaves into the ground creating a series of courtyards and topographic undulations before sweeping gracefully up into the air to establish a bold urban landmark.







## Dar Al Wasl Extension

**Location** Dubai, UAE  
**Size** 15,000 sqm  
**Client** Wasl Properties



The design is inspired by the natural elements wind, water, fire and earth. These influences work together in harmony.

Intended to complement the Dar Al Wasl Development a prime residential project located in Dubai's prominent Jumeirah district the Dar Al Wasl Extension is a masterpiece of retail design. Envisioned as an appealing public recreational space, the project creates a festive retail and leisure destination for not only the residents of the Dar Al Wasl community but also for their neighbours and public visitors. The project incorporates attractive landscaping, elegant water features and tranquil green spaces. The design is inspired by the natural elements wind, water, fire and earth.



Akwaan  
Mall

Location Riyadh, KSA  
Size 8,500 sqm  
Client Akwaan Properties

District’s primary retail and convenience destination, the mall’s internal design and layout considers and caters to the entire community.

Located in the Qurtoba district of Riyadh, the Akwaan Mall complements one of the area’s largest residential projects. The masterplan envisages the mall linking to the surrounding neighbourhoods via appealing pedestrian walkways and vehicular roads. The mall’s architecture features an enigmatic blend of classic styles and contemporary techniques. Traditional external finishes and elevation treatments work together with modern massing and opening shapes thus creating a visually engaging hub that the entire community can enjoy. Since Akwaan Mall is the district’s primary retail and convenience destination, the internal design and layout is carefully considered aimed at providing the community with a variety of essential services and amenities.





# Retail Experience

## Dewan Architects + Engineers

### Abu Dhabi, UAE

T +971 (2) 681 5777  
E [abudhabi@dewan-architects.com](mailto:abudhabi@dewan-architects.com)

### Dubai, UAE

T +971 (4) 240 2010  
E [dubai@dewan-architects.com](mailto:dubai@dewan-architects.com)

### Sharjah, UAE

T +971 (6) 599 6400  
E [sharjah@dewan-architects.com](mailto:sharjah@dewan-architects.com)

### Barcelona, Spain

T +34 933 427 427  
E [barcelona@dewan-architects.com](mailto:barcelona@dewan-architects.com)

### Riyadh, KSA

T +966 9200 29750  
E [riyadh@dewan-architects.com](mailto:riyadh@dewan-architects.com)

### Baghdad, Iraq

T +964 780 194 4498  
E [baghdad@dewan-architects.com](mailto:baghdad@dewan-architects.com)

### Cairo, Egypt

T +20 2 23146191  
E [cairo@dewan-architects.com](mailto:cairo@dewan-architects.com)

### Manila, Philippines

T +632 470 8197  
E [manila@dewan-architects.com](mailto:manila@dewan-architects.com)