

Dewan

Architects +
Engineers

Education Experience

www.dewan-architects.com

[@dewan.ae](https://www.instagram.com/dewan.ae)



© 2022, Dewan Architects + Engineers

ALL RIGHTS RESERVED.

Any unauthorized reprint or use of this material is strictly prohibited. No part of this publication may be reproduced or transmitted in any form or by electronic or mechanical means, including photocopying or by any information storage and retrieval system without permission in writing from the publisher.

Dewan
Architects +
Engineers

Who We Are

Dewan Architects + Engineers is a collective of architects, engineers, designers, planners, builders, makers, thinkers, and visionaries. Our collaborative team amasses over 35 years experience of designing and constructing innovative projects that redefine skylines, connect locals and visitors to cultural icons, and drastically raise the standard for sustainability.

+

1984

Dewan Established

1st Office,
Abu Dhabi,
United Arab Emirates

Since establishing our first office in 1984 in Abu Dhabi, Dewan has been integral to the Middle East's booming architectural and engineering industries. We've enhanced cities and suburban areas across the Middle East, from constructing Fountain Views, a spectacular mixed use residential development in Dubai, to designing Mamsha Al Saadiat, a master-planned community that promotes social cohesion through incorporating pristine beaches, stunning apartments, and world-class museums. Dewan is also a key partner in Saudi Vision 2030, the Kingdom's



Future -Ready

ambitious initiative to modernize and diversify its economy, with a focus on sustainable development. We're a team of optimists and innovators who motivate each other and our industry at-large to continue to push the boundaries of architecture. Dewan operates in a dozen countries across Europe, the Middle East, and Asia, specializing in mixed use, hospitality, residential, commercial, education, retail, and urban planning. Widely recognized by influential publications and numerous industry awards, Dewan continually elevates architecture's role in contributing to thriving societies.

What We Do

Dewan Architects + Engineers is a full-service design firm that manages complex and demanding projects of all sizes. Our multidisciplinary team leverages the latest technologies in construction and architecture to maximize sustainability, create unique and boundary-breaking designs, and deliver large-scale projects on-time under tight budgets.

+ Expertise

Architecture

- Conceptual Design
- Design Development
- BIM/Revit
- Graphic Design
- Data-Driven Design

Engineering

- Structural Engineering
- Mechanical Engineering
- Electrical Engineering
- Civil Engineering
- Architectural Engineering



Master Planning

- Structural & Regional Planning
- Urban Planning
- District Units Planning
- Urban Regeneration & Renewal
- Landscape Design

Interior Design

- Space Planning
- Furniture Schedules
- Signage & Wayfinding
- Art Design

Sustainability

- LEED/ESTIDAMA (APs/PQPs)
- Energy Modeling
- Environmental Impact Studies
- Daylighting Modeling & Analysis

Post Contract

- Construction Management
- Construction Supervision
- Defects Liability Supervision
- Progress Reporting
- Cost Control & Planning
- Pre/Post Contract QS
- BOQs
- Value Engineering
- Contract Documentation

Global Reach

Our dedicated teams work in nearly a dozen countries across the Middle East and Europe and have partnered with more than 100 high profile firms around the world.

+ At a glance

400 +

Projects

500 +

Professionals

30 +

Awards & Rankings

08

Offices

39 +

Languages

50 +

Nationalities

Offices

– Abu Dhabi
United Arab Emirates

– Dubai
United Arab Emirates

– Sharjah
United Arab Emirates

– Riyadh
Saudi Arabia

– Cairo
Egypt

– Baghdad
Iraq

– Barcelona
Spain

– Manila
Philippines





Al Bateen School

Location Abu Dhabi, UAE
Size 23,000 sqm
Client Aldar Properties
Associates CPG Consultants



Designed for 1,200 students from the ages of 11 to 18, the school consists of an iconic three storey building and auxiliary structures.

Its innovative design reflects this insight, and seeks to embody Aldar Academies' mission: To provide an inspiring venue for the provision of quality, sustainable education within a stimulating and secure environment. Designed for 1,200 students from the ages of 11 to 18, the school consists of an iconic three storey building and auxiliary structures located in the Al Bateen area on an island site in the heart of Abu Dhabi city. Its revolutionary design aside, Al Bateen's highly efficient building is constructed in an ecologically friendly manner that sets the benchmark for primary education in the UAE's capital. Offering a comprehensive and enjoyable learning environment, the main building comprises of classrooms, sports areas, creative art rooms, home economics laboratory, and modern science and technology facilities.

ADEC
School Phase 1

Location Abu Dhabi, UAE
Size 20,000 sqm
Client Abu Dhabi Education Council

Each school hosts laboratories, a 600 seat auditorium, library, gymnasium, swimming pool and multipurpose sports hall.

Each school is intended to accommodate an average of 1,250 students. In addition to spacious classrooms, each school hosts several laboratories, a 600-seat auditorium, library, cafeteria and kitchen gymnasium, swimming pool and a multipurpose sports hall. The schools are designed, built and equipped to world class standards. In particular, the laboratories and ICT (information and communications technology) rooms offer advanced systems and state of the art technology. Additionally, all educational areas across each school are enabled for wireless connectivity and internet access thus encouraging students to learn and share knowledge in different ways. The project has achieved a 3 Pearls Estidama Rating for its sustainable design that combines simplicity and effectiveness with enhanced efficiency.





ADEC School Phase 2

Location Abu Dhabi, UAE
Size 10,000 sqm
Client Abu Dhabi Education Council

The laboratories and ICT rooms offer advanced systems and state of the art technology.

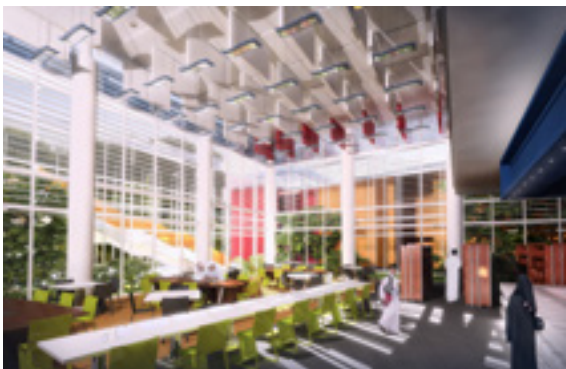
Each school is intended to accommodate an average of 1,250 students. In addition to spacious classrooms, each school hosts several laboratories, a 600-seat auditorium, library, cafeteria and kitchen gymnasium, swimming pool and a multipurpose sports hall. The schools are designed, built and equipped to world class standards. In particular, the laboratories and ICT (information and communications technology) rooms offer advanced systems and state of the art technology. Additionally, all educational areas across each school are enabled for wireless connectivity and internet access thus encouraging students to learn and share knowledge in different ways. The project has achieved a 3 Pearls Estidama Rating for its sustainable design that combines simplicity and effectiveness with enhanced efficiency.

ADEC
School Phase 3

Location Abu Dhabi, UAE
Size 20,000 sqm
Client Abu Dhabi Education Council

3 Pearls Estidama Rating for its sustainable design that combines simplicity and effectiveness with enhanced efficiency.

Each school is intended to accommodate an average of 1,250 students. In addition to spacious classrooms, each school hosts several laboratories, a 600-seat auditorium, library, cafeteria and kitchen gymnasium, swimming pool and a multipurpose sports hall. The schools are designed, built and equipped to world class standards. In particular, the laboratories and ICT (information and communications technology) rooms offer advanced systems and state of the art technology. Additionally, all educational areas across each school are enabled for wireless connectivity and internet access thus encouraging students to learn and share knowledge in different ways. The project has achieved a 3 Pearls Estidama Rating for its sustainable design that combines simplicity and effectiveness with enhanced efficiency.





**Repton
School**

Location Abu Dhabi, UAE
Size 7,000 sqm
Client Sorouh



The design incorporates terraces on different levels providing healthy outdoor spaces for young students to enjoy a variety of activities.

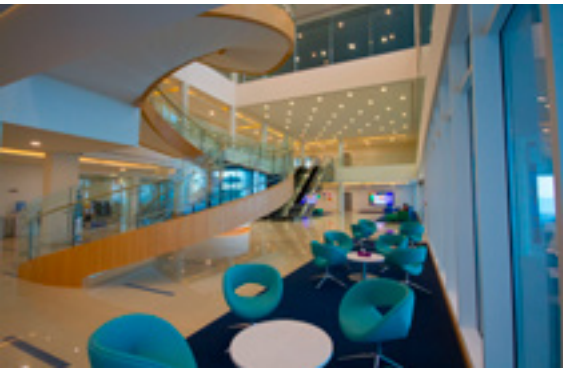
The Repton Foundation School is located on Abu Dhabi's Reem Island and caters exclusively to young children specifically students of kindergarten 1 and 2, and grade 1 only. The school's two-storey building hosts spacious and sunlit classrooms grade 1 students are assigned to the first and second floors, while the ground floor is dedicated to kindergarten students. The building's design incorporates several terraces on different levels, and these provide healthy outdoor spaces for the students to enjoy a variety of activities. Given the school's young population, safety and security are vital considerations. Inside the site's perimeter, clearly designated indoor and outdoor circulation routes guide the students around the school.

Amity
Premium School

Location Abu Dhabi, UAE
Size 36,000 sqm
Client Amity Education
Associates CPG Consultants

Aesthetically engaging, the school’s admin block, auditorium and boathouse resemble ship hulls floating on the shoreline.

Located in Abu Dhabi’s Al Bahya district, the Amity International School occupies a large and attractive plot close to the water’s edge. Designed to host 3,000 students from pre-kindergarten to senior year the school offers a premium educational environment. Its interconnected and student-focused campus enhances the learning experience and encourages students to interact with one another. The school’s masterplan features distinct zoning between academic, sports and residential areas.





Birmingham University

Location Dubai, UAE
Size 79,452 sqm
Client Tecom Group

A dynamic and inspiring concept based on the idea of creating an “academic village fabric”.

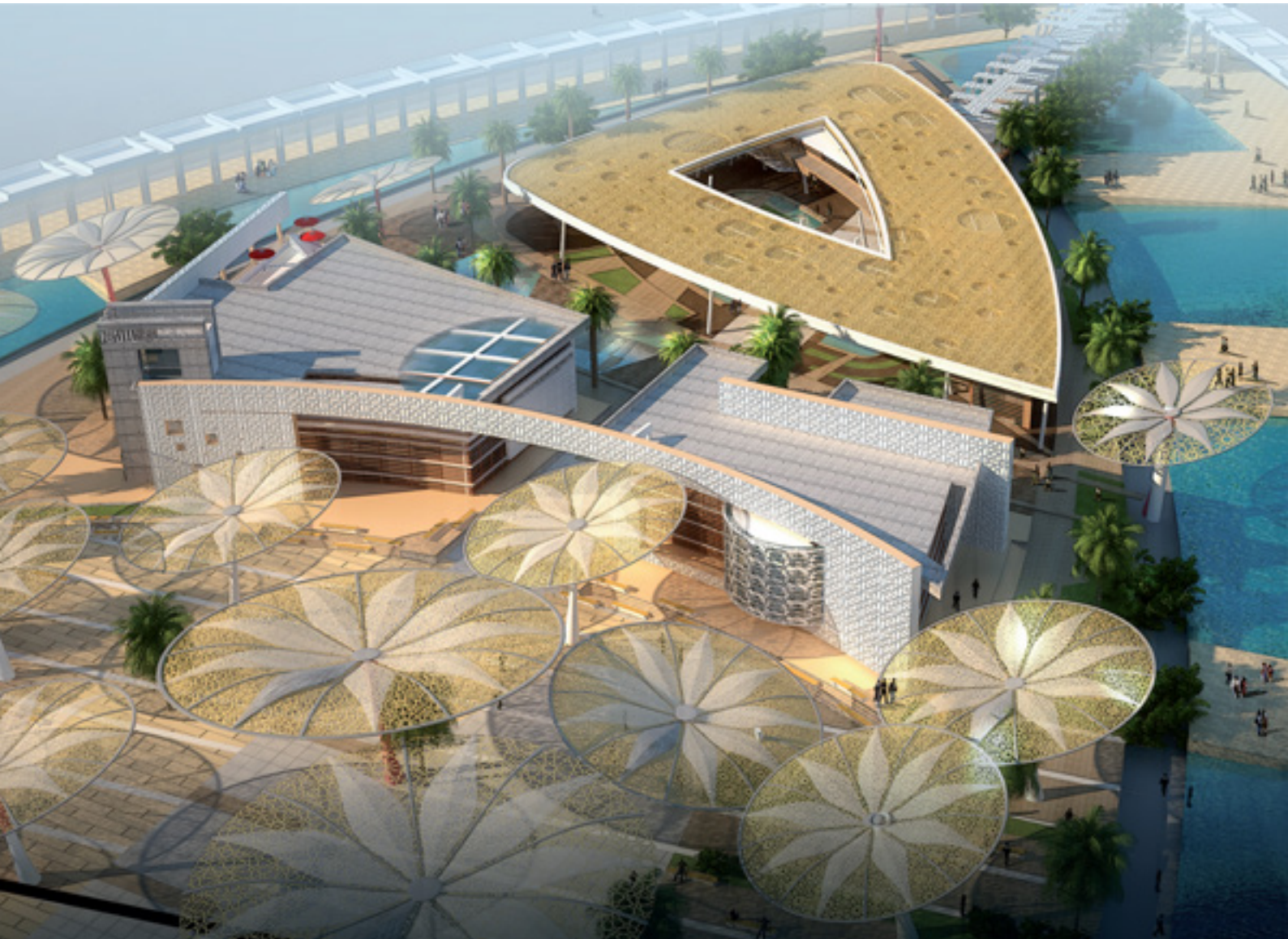
Located in the Dubai academic City in Dubai, the Birmingham University Campus is a project that aims to create a regional model of planning, design and environmental stewardship, with the purpose of creating a physical environment that can enhance the academic experience, encourage cultural interaction and stimulate intellectual and social exchange- a community of learning. The masterplan was developed placing the ‘hub’ at the center, serving as a welcoming feature and assuming itself as the heart of the campus (the academic core) entered via the drop-in area to the north and park entrance from the south. An internal linear route, the academic spine, connects the buildings either side.

| **Samarra**
University

Location Samarra, Iraq
Size 2.6 Million sqm
Client Ministry of Higher Education and Scientific Research

The architecture challenges convention by creating vibrant urban spaces that enhance an interactive educational environment.

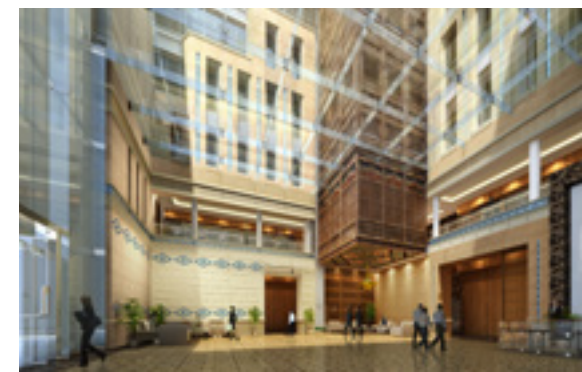
Home to 16 specialised colleges, the Samarra University plays a pivotal role in empowering the next generation of Iraqis. Its sprawling campus hosts state-of-the-art research centres and laboratories, conference hall, central library, student and faculty residences, social and cultural centres, sports facilities, agricultural farms, the university headquarters and deanship building, mosque and many other facilities. Offering a world class academic and research environment, Samarra University is intended to accommodate more than 20,000 students. A key design objective is to create spaces that facilitate and encourage meaningful academic and social student interactions.





Karbala University

Location Karbala, Iraq
Size 16,000 sqm
Client University of Karbala



Sculpted to seamlessly merge the interior with the exterior with a spider system glass structure that creates a welcoming entrance.

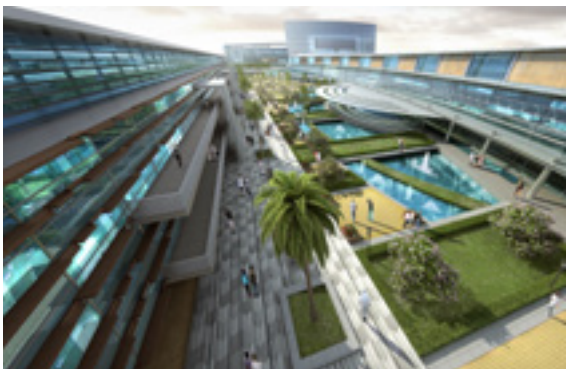
Regular geometric forms are utilised to balance the effect and convey a sense of effortless grace. The building's core is purposefully kept hollow to allow natural light and ventilation into the central corridors and spaces. Similarly, the building's open northern corner is skilfully sculpted to seamlessly merge the interior with the exterior. It is then adorned with a spider system glass structure that creates a welcoming entrance. This also helps to maintain a visual and physical connection with the project's other buildings, which in an appealing contrast to the soaring height of the main building - are a series of elegant low-rise structures. These constitute the various public facilities such as a conference hall, exhibition areas, prayer halls and a cafeteria.

**Basra Medical
City University**

Location Basra, Iraq
Size 110,000 sqm
Client Imam Hussein Holy Shrine

The design and architecture is derived from ancient Sumerian culture and the symbolism of serpents coiled into a double helix.

The project's design and architecture is derived from ancient Sumerian culture and the symbolism of serpents coiled into a double helix. It is one half of this helix that provides the concept around which the campus is planned. The helix's curved form inspires the central academic plaza that is surrounded by the four faculties, as well as various facilities such as the main library, auditorium and student centre. Serving as the campus' hub literally and metaphorically the academic plaza is where students meet gather and interact socially. In addition to the presidency building that also functions as the campus' main entrance, the project also includes staff and student residences, and a comprehensive sports zone.





German School in Cairo

Location Cairo, Egypt
Size 21,000 sqm
Client Turner Construction Company

The structure features neutral color tones and is reflective of its exterior environment.

This German curriculum school is situated in Emaar's prestigious New Cairo City and is in close proximity to the new campus of the American University of Cairo. Set over 3 floors, this purpose built K-12 educational facility will be built to house 1,750 students from Kindergarten through to grade 12 to be a safe hub of learning and personal growth. The structure features neutral color tones and is reflective of its exterior environment. Natural lighting is abundant throughout the premises and strategically placed courtyards serve as functional outdoor learning and activity spaces. There are compartmentalized learning spaces which accommodate the different age groups. Ample parking is provided on the ground and basement levels for ease of access.

English School in Cairo

Location Cairo, Egypt
Size 22,000 sqm
Client Emaar

The structure features neutral color tones and is reflective of its exterior environment.

This English school is situated in Emaar’s prestigious New Cairo City and is in close proximity to the new campus of the American University of Cairo. Set over 3 floors, this purpose built K-12 educational facility will be built to house 1,750 students from Kindergarten through to grade 12 to be a safe hub of learning and personal growth. The structure features neutral color tones and is reflective of its exterior environment. Natural lighting is abundant throughout the premises and strategically placed courtyards serve as functional outdoor learning and activity spaces. There are compartmentalized learning spaces which accommodate the different age groups. Ample parking is provided on the ground and basement levels for ease of access.





Global Indian International School

Location Abu Dhabi, UAE
Size 19,000 sqm
Client Global Indian International School



Modular, compact yet efficient design the school allows students to transition seamlessly from educational to recreational areas.

Located at a prime location in Baniyas on a site of 15,900 sqm with a total built up area of approximately 19,000 sqm and catering to about 3,000 students, My Global School is set to become one of the U.A.E's elite private schools. With its modular, compact yet efficient design the school allows students to transition seamlessly from educational to recreational areas. As male and female students are required to be segregated at higher years, separate entry/exit points have been incorporated to ensure that the segregation requirement has been met. Female and KG students access the site from the northern entry points, whereas male students and faculty enter the school from the southern gates.

**King Faisal
University**

Location Al Hofuf, KSA
Size 8,800 sqm
Client King Faisal University

Key to the concept’s success is a central landscaped vortex that connects with everything to create a vibrant focal point.

Located in Al Hofuf, the King Faisal University is a pioneering concept that combines educational buildings with prime commercial and retail space. Key to the concept’s success is a central landscaped vortex that connects everything – and creates a vibrant focal point for social and academic interaction. Sustaining and shaping this interaction is the university mall - in reality a community centre for the entire neighbourhood that helps bring people together. Various adjoining spaces spiral inward, figuratively and literally. Intended to be a transformative environment, the university mall engages visitors with an extraordinary landscape.





Oil & Gas University

Location Basra, Iraq
Size 140,000 sqm
Client University of Kufa

Built around a central courtyard to create a social node where students meet and interact amongst shaded and ventilated areas.

The project includes several administrative buildings, various colleges, a vast conference hall, central library, laboratories and workshops. There are also solar and renewable energy generation fields, a recycling zone, and a dedicated area for geological experiments and excavations. The master design carefully arranges the various buildings and structures along two main axes. The first axis perpendicular to the main street is designated as the primary circulation axis along which all public buildings are arranged. The second axis running from north to west takes into consideration the sun's path and direction of prevailing winds. The academic buildings are arranged along this axis for optimal comfort and energy efficiency.

Education Experience

Dewan Architects + Engineers

Abu Dhabi, UAE

T +971 (2) 681 5777
E abudhabi@dewan-architects.com

Dubai, UAE

T +971 (4) 240 2010
E dubai@dewan-architects.com

Sharjah, UAE

T +971 (6) 599 6400
E sharjah@dewan-architects.com

Barcelona, Spain

T +34 933 427 427
E barcelona@dewan-architects.com

Riyadh, KSA

T +966 9200 29750
E riyadh@dewan-architects.com

Baghdad, Iraq

T +964 780 194 4498
E baghdad@dewan-architects.com

Cairo, Egypt

T +20 2 23146191
E cairo@dewan-architects.com

Manila, Philippines

T +632 470 8197
E manila@dewan-architects.com